



MIRAI INTEX

SAVE THE PLANET WITH US



| Signals | | |
|-------------------------------------|-------|----------------------|
| Temperature in the chamber, °C | -35,0 | Vacuum in the system |
| Temperature of the motor, °C | 74,7 | Recuperator drop |
| Inlet temperature, °C | 10,0 | Main fan filter |
| Outlet temperature, °C | -13,5 | Inverter |
| The pressure of the compressor, kPa | 37,9 | |
| Drop on heat exchangers, kPa | 0,34 | |
| Power, % | 53 | |
| Rotation speed, rpm | 38000 | |
| Drop on the grid, kPa | 0,69 | |

<< Back Graph Alarm Logs Time and lang Settings



MONITORING SYSTEM













MONITORING SYSTEM

OPTIONS

REMOTE ACCESS SYSTEM (RAS) / REMOTE MONITORING SYSTEM (RMS)

MIRAI INTEX provides several remote monitoring options for their customers. If you're an end customer, distributor, or service provider who wants to enhance safety and increase the longevity of your projects that utilize MIRAI Cold refrigeration machines, this solution is the perfect choice.

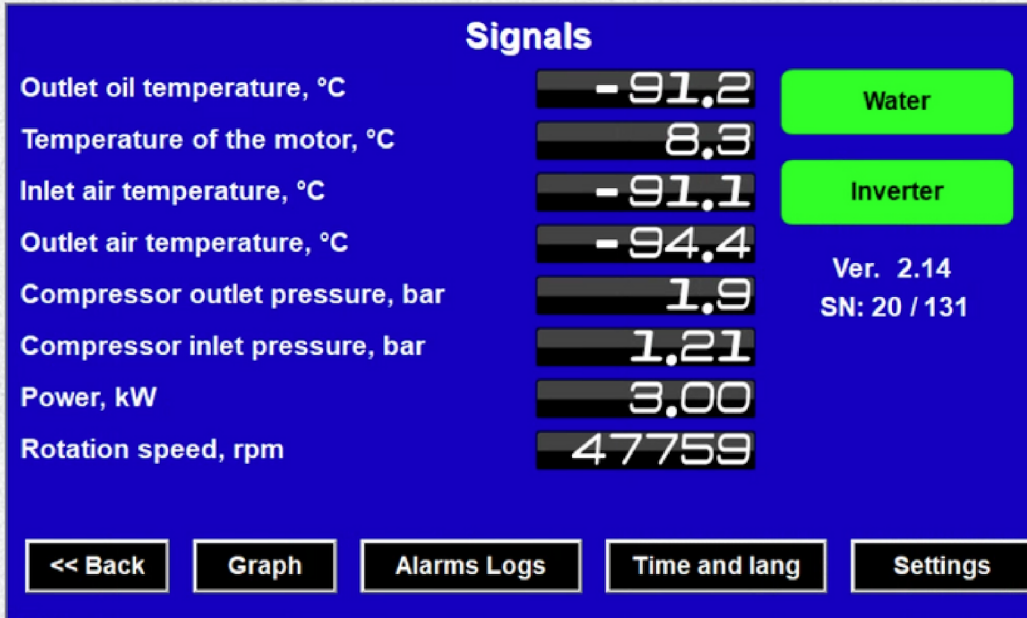
There are **two ways** to connect to the monitoring system: with or without remote access.

| Options | Remote Access System (RAS) | Remote Monitoring System (RMS) |
|---|--|---|
| Distant access to the system by our engineers in case of necessary assistance |  |  |
| Software updates |  |  |
| Access to machine data to the customer |  |  |
| 24/7 access to data |  |  |
| Access to machine data older than 3 days |  |  |



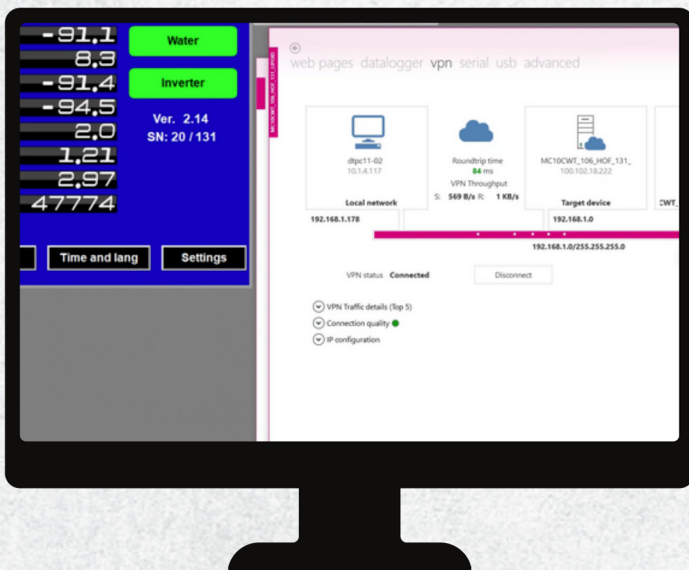
MONITORING SYSTEM

REMOTE ACCESS SYSTEM (RAS)



The **Remote Access System** allows our engineer access to the machine and immediate assistance. The parameters to be kept by the machine are set according to the customer's request.

In case of need of remote support, our engineer can connect to the system remotely and correct the parameters, provide software updates and download the data logs.

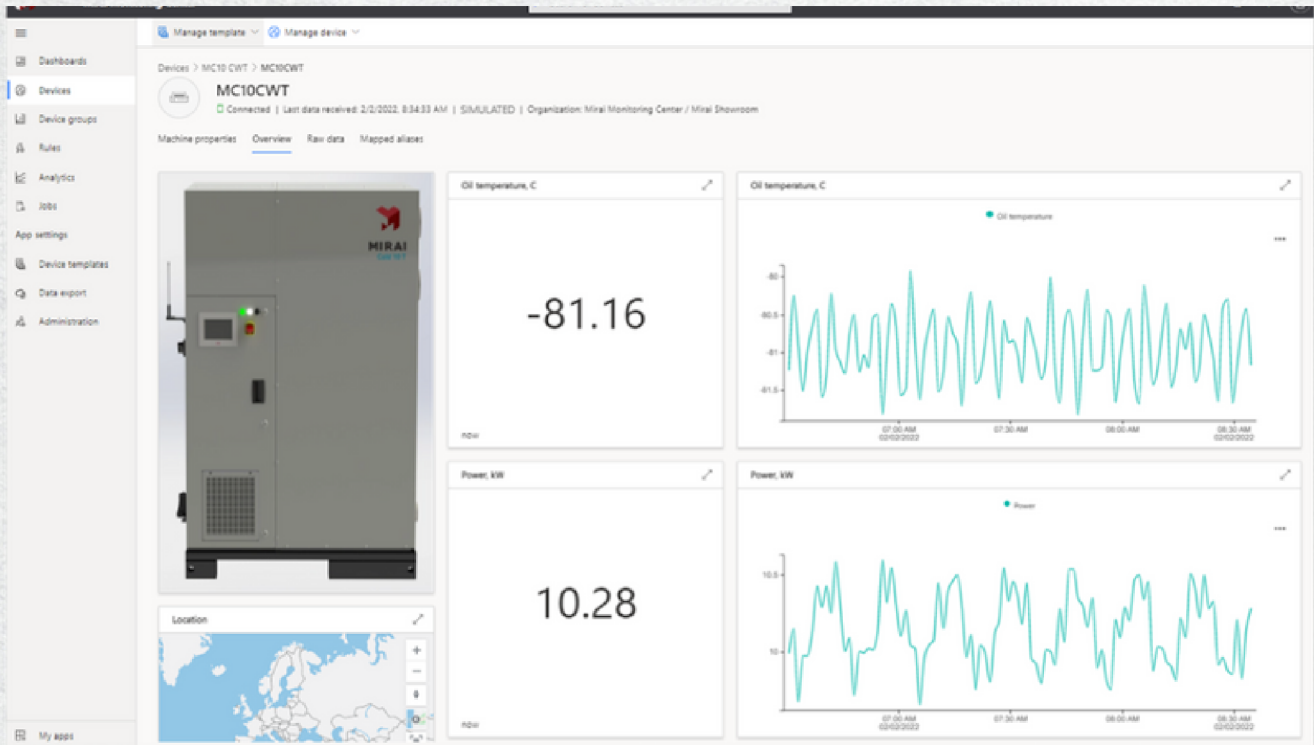


The pictures shows an example of a screen that our engineer sees and has access to data that he can change remotely.



MONITORING SYSTEM

MIRAI MONITORING CENTER



MONITORING MAIN FUNCTIONS

DASHBOARD

The main hub of with crucial data. Fully customizable with quick access to preferred information. Each dashboard tile leads to the source feature. Possibility to create multiple dashboards.

DEVICES

Section with each MIRAI Cold machine equipped with the Remote Monitoring System. Detail of one machine with the performance data (picture above). Machines have full manufacturing details (Type, S/N, Firmware version) and distributor details (Dealer, Client, Client's machine dedicated number, group number, date of commissioning and location of the machine).

DEVICE GROUPS

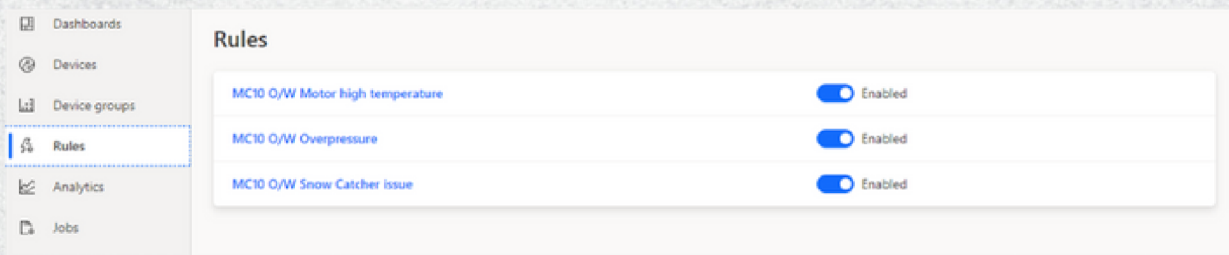
Multiple MIRAI Cold machines can be organized into groups. Function convenient for project with several machines. Machines can be grouped based on the end customer, type of the machine, location of installation and more.



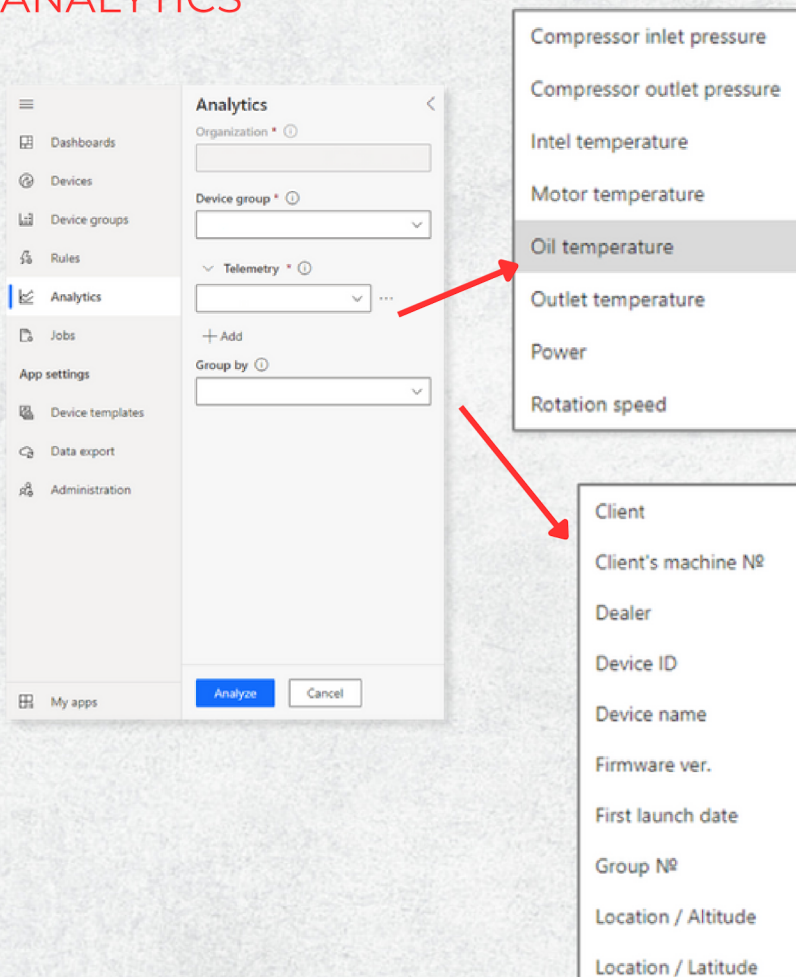
MONITORING SYSTEM

RULES

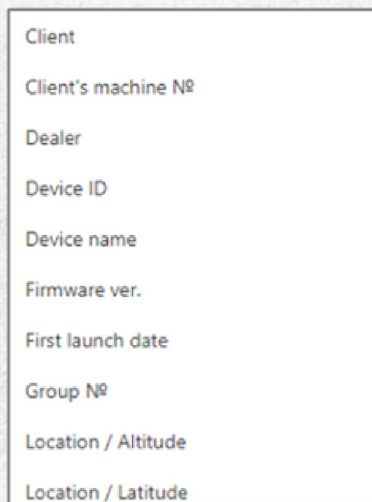
One of the most interesting new function. With Rules you'll receive a notification based on the set rule (or multiple rules) for selected machine. Notification can be either simple email, more sophisticated IoT actions. Example of rules picture below. If the rule is not currently needed it can be simply disabled and enabled when it is needed again.



ANALYTICS



Analyze machine performance parameters in more depth with the analytics tools. Possibility to analyze single machines, groups of machines and by other criteria (see below).



MIRAI website